

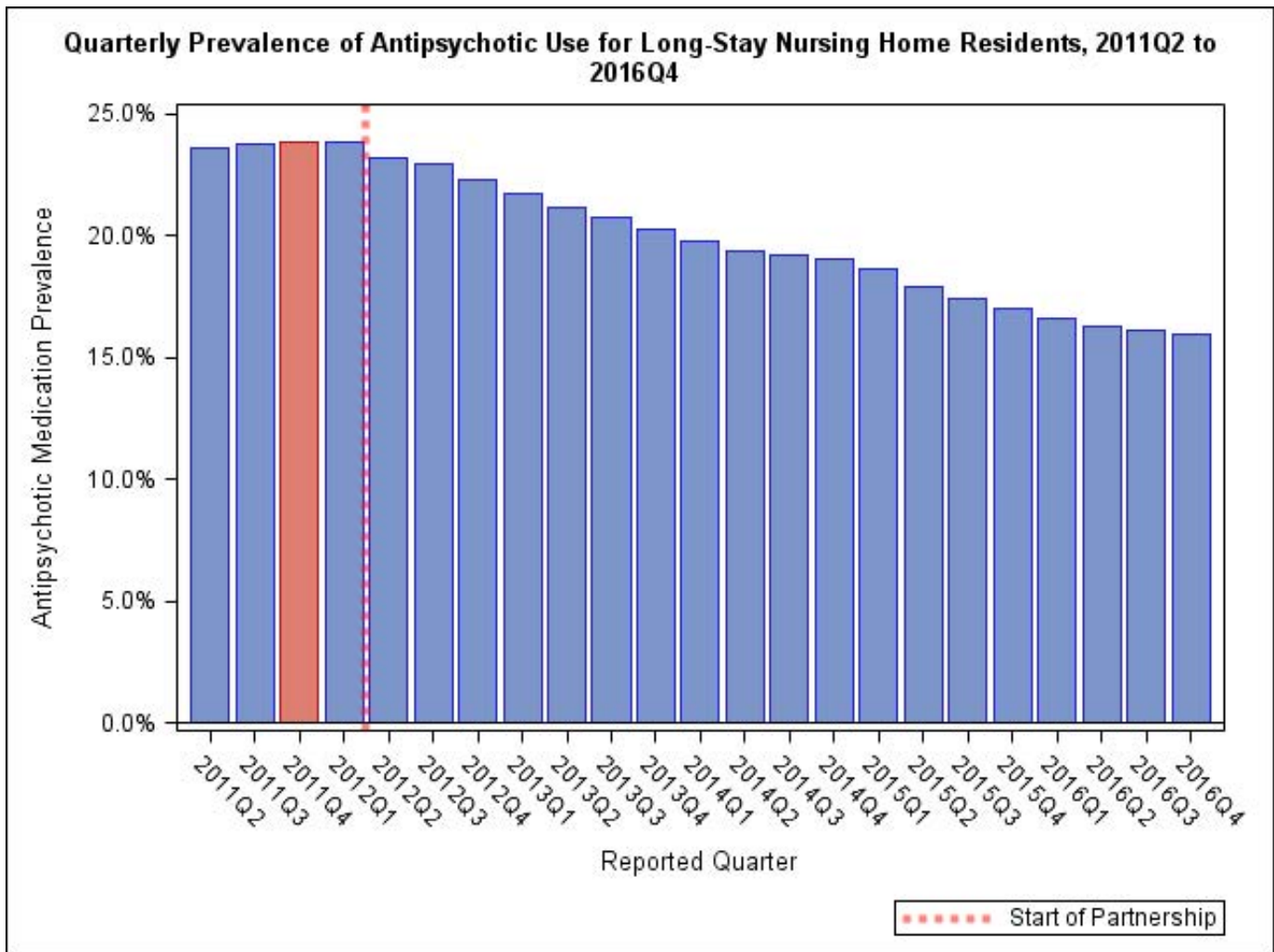
# National Partnership to Improve Dementia Care in Nursing Homes: Antipsychotic Medication Use Data Report (March 2017)

The National Partnership to Improve Dementia Care in Nursing Homes is committed to improving the quality of care for individuals with dementia living in nursing homes. The National Partnership has a mission to deliver health care that is person-centered, comprehensive and interdisciplinary with a specific focus on protecting residents from being prescribed antipsychotic medications unless there is a valid, clinical indication and a systematic process to evaluate each individual's need. The Centers for Medicare & Medicaid Services (CMS) promotes a multidimensional approach that includes; research, partnerships and state-based coalitions, revised surveyor guidance, training for providers and surveyors and public reporting.

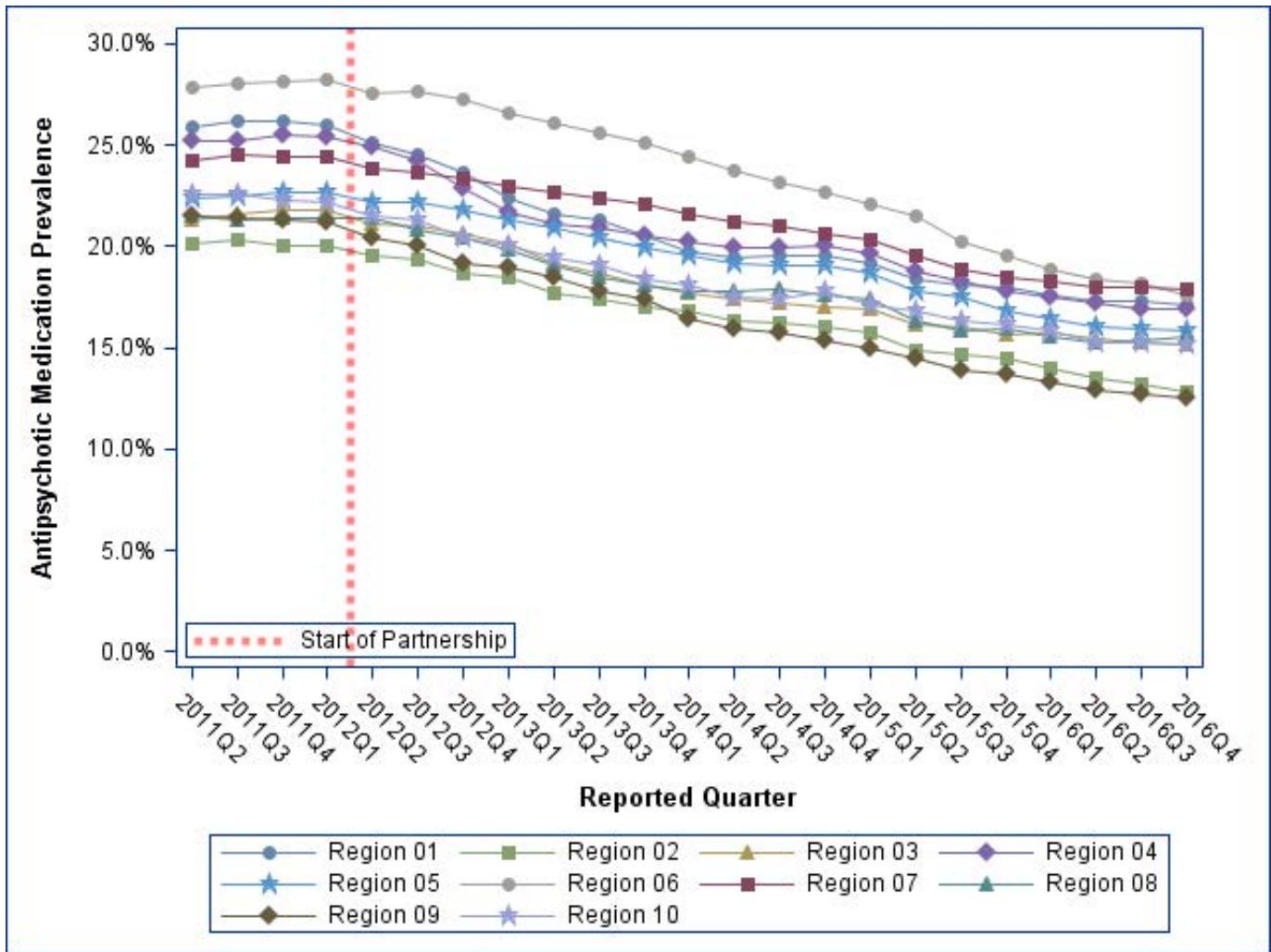
CMS is tracking the progress of the National Partnership by reviewing publicly reported measures. The official measure of the Partnership is the percentage of long-stay nursing home residents who are receiving an antipsychotic medication, excluding those residents diagnosed with schizophrenia, Huntington's Disease or Tourette's Syndrome. In 2011Q4, 23.9 percent of long-stay nursing home residents were receiving an antipsychotic medication; since then there has been a decrease of 33.2 percent to a national prevalence of 16 percent in 2016Q4. Success has varied by state and CMS region, with many states and regions having seen a reduction of greater than 30 percent.

A four-quarter average of this measure is posted to the Nursing Home Compare website at <https://www.medicare.gov/nursinghomecompare/>.

For more information on the National Partnership, please send correspondence to [dnh\\_behavioralhealth@cms.hhs.gov](mailto:dnh_behavioralhealth@cms.hhs.gov).



## Quarterly Prevalence of Antipsychotic Use for Long-Stay Residents, CMS Regions



| Region    | 2011Q4 | 2012Q1 | 2012Q4 | 2013Q1 | 2013Q4 | 2014Q1 | 2014Q2 | 2014Q3 | 2014Q4 | 2015Q1 | 2015Q2 | 2015Q3 | 2015Q4 | 2016Q1 | 2016Q2 | 2016Q3 | 2016Q4 | Percentage point difference (2011Q4-2016Q4) | % Change |
|-----------|--------|--------|--------|--------|--------|--------|--------|--------|--------|--------|--------|--------|--------|--------|--------|--------|--------|---|----------|
| National  | 23.9%  | 23.8%  | 22.3%  | 21.7%  | 20.3%  | 19.79  | 19.4%  | 19.2%  | 19.1%  | 18.7%  | 18.0%  | 17.4%  | 17.0%  | 16.6%  | 16.3%  | 16.1%  | 16.0%  | -7.92                                       | -33.2%   |
| Region 01 | 26.2%  | 26.0%  | 23.7%  | 22.4%  | 20.5%  | 19.74  | 19.4%  | 19.6%  | 19.6%  | 19.1%  | 18.4%  | 18.1%  | 18.0%  | 17.6%  | 17.3%  | 17.3%  | 17.1%  | -9.08                                       | -34.6%   |
| Region 02 | 20.1%  | 20.0%  | 18.7%  | 18.4%  | 17.1%  | 16.78  | 16.3%  | 16.2%  | 16.1%  | 15.7%  | 14.9%  | 14.6%  | 14.5%  | 14.0%  | 13.5%  | 13.3%  | 12.8%  | -7.26                                       | -36.2%   |
| Region 03 | 21.8%  | 21.8%  | 20.6%  | 20.1%  | 18.1%  | 17.73  | 17.4%  | 17.2%  | 17.1%  | 16.9%  | 16.2%  | 16.1%  | 15.7%  | 15.8%  | 15.5%  | 15.3%  | 15.1%  | -6.67                                       | -30.6%   |
| Region 04 | 25.5%  | 25.4%  | 22.9%  | 21.7%  | 20.5%  | 20.24  | 20.0%  | 19.9%  | 20.0%  | 19.6%  | 18.8%  | 18.2%  | 17.8%  | 17.5%  | 17.2%  | 16.9%  | 16.9%  | -8.57                                       | -33.6%   |
| Region 05 | 22.7%  | 22.7%  | 21.8%  | 21.3%  | 19.9%  | 19.55  | 19.1%  | 19.1%  | 19.0%  | 18.6%  | 17.8%  | 17.5%  | 16.8%  | 16.4%  | 16.0%  | 16.0%  | 15.9%  | -6.85                                       | -30.2%   |
| Region 06 | 28.2%  | 28.3%  | 27.2%  | 26.6%  | 25.1%  | 24.40  | 23.8%  | 23.2%  | 22.6%  | 22.1%  | 21.5%  | 20.3%  | 19.6%  | 18.9%  | 18.4%  | 18.2%  | 17.6%  | -10.61                                      | -37.6%   |
| Region 07 | 24.5%  | 24.4%  | 23.4%  | 22.9%  | 22.1%  | 21.65  | 21.2%  | 21.0%  | 20.7%  | 20.3%  | 19.6%  | 18.9%  | 18.4%  | 18.3%  | 18.0%  | 18.0%  | 17.9%  | -6.58                                       | -26.9%   |
| Region 08 | 21.4%  | 21.5%  | 20.4%  | 19.8%  | 18.1%  | 17.77  | 17.8%  | 17.9%  | 17.6%  | 17.4%  | 16.3%  | 15.8%  | 16.0%  | 15.6%  | 15.2%  | 15.4%  | 15.5%  | -5.94                                       | -27.7%   |
| Region 09 | 21.3%  | 21.2%  | 19.2%  | 18.9%  | 17.4%  | 16.44  | 15.9%  | 15.7%  | 15.3%  | 15.0%  | 14.5%  | 13.9%  | 13.7%  | 13.3%  | 12.9%  | 12.7%  | 12.5%  | -8.82                                       | -41.4%   |
| Region 10 | 22.3%  | 22.1%  | 20.4%  | 20.1%  | 18.4%  | 18.05  | 17.5%  | 17.4%  | 17.8%  | 17.1%  | 16.9%  | 16.4%  | 16.2%  | 15.9%  | 15.2%  | 15.3%  | 15.2%  | -7.09                                       | -31.8%   |

## Quarterly Prevalence of Antipsychotic Use for Long-Stay Residents, States

| State                | 2011Q4 | 2012Q1 | 2012Q4 | 2013Q1 | 2013Q4 | 2014Q1 | 2014Q2 | 2014Q3 | 2014Q4 | 2015Q1 | 2015Q2 | 2015Q3 | 2015Q4 | 2016Q1 | 2016Q2 | 2016Q3 | 2016Q4 | Rank in 2016Q4 (lower=better) | Percentage point difference (2011Q4-2016Q4) | % Change |
|----------------------|--------|--------|--------|--------|--------|--------|--------|--------|--------|--------|--------|--------|--------|--------|--------|--------|--------|-------------------------------|---|----------|
| ALABAMA              | 27.3%  | 27.5%  | 24.0%  | 22.9%  | 22.2%  | 22.13  | 22.4%  | 22.0%  | 21.9%  | 21.7%  | 20.6%  | 20.1%  | 19.6%  | 19.2%  | 18.6%  | 19.0%  | 18.9%  | 44                            | -8.45                                       | -30.9%   |
| ALASKA               | 13.7%  | 13.4%  | 12.4%  | 12.5%  | 12.8%  | 12.75  | 14.8%  | 15.9%  | 16.4%  | 14.4%  | 14.9%  | 15.4%  | 15.0%  | 12.9%  | 11.3%  | 12.1%  | 10.0%  | 2                             | -3.71                                       | -27.0%   |
| ARIZONA              | 22.7%  | 22.7%  | 20.9%  | 20.4%  | 20.7%  | 18.55  | 17.5%  | 18.4%  | 17.7%  | 17.3%  | 17.6%  | 17.6%  | 17.0%  | 16.7%  | 15.7%  | 14.1%  | 14.0%  | 13                            | -8.79                                       | -38.6%   |
| ARKANSAS             | 26.1%  | 26.1%  | 25.5%  | 25.1%  | 22.8%  | 21.70  | 19.9%  | 18.8%  | 17.9%  | 17.6%  | 17.0%  | 16.9%  | 16.9%  | 16.6%  | 15.9%  | 15.7%  | 15.5%  | 23                            | -10.65                                      | -40.8%   |
| CALIFORNIA           | 21.6%  | 21.3%  | 19.2%  | 19.0%  | 17.1%  | 16.34  | 15.8%  | 15.5%  | 15.2%  | 14.7%  | 14.2%  | 13.6%  | 13.5%  | 13.1%  | 12.7%  | 12.7%  | 12.4%  | 6                             | -9.14                                       | -42.4%   |
| COLORADO             | 19.9%  | 19.9%  | 19.4%  | 18.5%  | 16.4%  | 16.42  | 16.1%  | 16.0%  | 15.9%  | 16.1%  | 15.3%  | 15.2%  | 14.9%  | 14.9%  | 14.2%  | 14.1%  | 14.5%  | 17                            | -5.45                                       | -27.4%   |
| CONNECTICUT          | 26.0%  | 25.8%  | 23.2%  | 22.4%  | 21.0%  | 20.41  | 20.3%  | 20.1%  | 20.5%  | 19.9%  | 18.6%  | 17.5%  | 16.9%  | 16.5%  | 16.1%  | 16.5%  | 16.3%  | 29                            | -9.73                                       | -37.4%   |
| DELAWARE             | 21.3%  | 21.8%  | 20.9%  | 18.0%  | 15.5%  | 15.47  | 14.7%  | 14.8%  | 14.8%  | 14.5%  | 14.2%  | 13.5%  | 12.6%  | 12.9%  | 14.1%  | 13.5%  | 12.9%  | 8                             | -8.42                                       | -39.6%   |
| DISTRICT OF COLUMBIA | 20.0%  | 19.4%  | 18.2%  | 17.4%  | 14.5%  | 14.84  | 15.0%  | 14.7%  | 14.1%  | 13.1%  | 12.8%  | 13.0%  | 12.9%  | 11.6%  | 11.9%  | 11.3%  | 10.9%  | 3                             | -9.13                                       | -45.7%   |
| FLORIDA              | 24.5%  | 24.6%  | 23.3%  | 22.7%  | 21.2%  | 21.18  | 20.6%  | 20.6%  | 20.8%  | 20.3%  | 18.9%  | 17.6%  | 16.9%  | 16.4%  | 16.0%  | 15.8%  | 15.9%  | 27                            | -8.56                                       | -35.0%   |
| GEORGIA              | 28.7%  | 28.7%  | 24.2%  | 22.7%  | 21.1%  | 20.59  | 20.3%  | 20.1%  | 20.2%  | 20.1%  | 19.9%  | 19.5%  | 19.8%  | 19.7%  | 19.4%  | 19.0%  | 18.9%  | 46                            | -9.71                                       | -33.9%   |
| HAWAII               | 12.5%  | 13.5%  | 11.7%  | 11.0%  | 11.6%  | 8.54   | 9.1%   | 8.7%   | 8.4%   | 10.9%  | 8.1%   | 7.6%   | 7.6%   | 7.6%   | 7.8%   | 6.9%   | 7.5%   | 1                             | -4.99                                       | -40.1%   |
| IDAHO                | 25.3%  | 26.4%  | 23.9%  | 23.1%  | 19.3%  | 19.33  | 18.9%  | 18.4%  | 17.2%  | 18.7%  | 16.8%  | 16.3%  | 16.1%  | 15.7%  | 16.4%  | 17.0%  | 18.4%  | 43                            | -6.96                                       | -27.5%   |
| ILLINOIS             | 25.7%  | 25.6%  | 25.5%  | 25.0%  | 24.0%  | 24.14  | 23.7%  | 23.5%  | 23.1%  | 22.9%  | 22.1%  | 21.7%  | 20.0%  | 19.6%  | 19.2%  | 19.2%  | 19.2%  | 47                            | -6.49                                       | -25.2%   |
| INDIANA              | 24.0%  | 24.1%  | 22.2%  | 21.7%  | 20.2%  | 19.85  | 19.2%  | 19.0%  | 18.9%  | 18.4%  | 17.1%  | 16.4%  | 15.9%  | 15.9%  | 15.8%  | 15.4%  | 15.5%  | 22                            | -8.57                                       | -35.7%   |
| IOWA                 | 22.3%  | 22.0%  | 20.6%  | 20.2%  | 20.0%  | 19.71  | 19.3%  | 19.2%  | 18.9%  | 18.3%  | 17.6%  | 16.9%  | 16.2%  | 15.9%  | 15.3%  | 15.2%  | 15.1%  | 19                            | -7.25                                       | -32.4%   |
| KANSAS               | 26.1%  | 26.1%  | 25.1%  | 24.2%  | 23.0%  | 23.14  | 22.8%  | 23.2%  | 22.3%  | 22.2%  | 20.9%  | 20.4%  | 20.1%  | 20.5%  | 20.5%  | 20.3%  | 19.9%  | 51                            | -6.23                                       | -23.8%   |
| KENTUCKY             | 26.0%  | 26.0%  | 23.1%  | 21.9%  | 21.6%  | 21.16  | 20.9%  | 21.1%  | 21.1%  | 21.4%  | 20.1%  | 19.9%  | 20.3%  | 20.0%  | 19.9%  | 19.7%  | 19.3%  | 48                            | -6.70                                       | -25.8%   |
| LOUISIANA            | 29.7%  | 29.7%  | 28.6%  | 27.8%  | 26.5%  | 25.51  | 25.1%  | 25.0%  | 25.0%  | 24.9%  | 23.7%  | 22.3%  | 20.0%  | 19.1%  | 19.4%  | 18.5%  | 18.2%  | 41                            | -11.56                                      | -38.9%   |
| MAINE                | 27.2%  | 26.9%  | 24.2%  | 22.6%  | 20.1%  | 18.55  | 18.2%  | 19.1%  | 19.3%  | 18.9%  | 18.3%  | 18.1%  | 17.4%  | 17.2%  | 16.8%  | 17.5%  | 17.3%  | 37                            | -9.96                                       | -36.6%   |
| MARYLAND             | 19.8%  | 19.6%  | 17.7%  | 17.3%  | 15.9%  | 15.95  | 15.8%  | 15.4%  | 14.8%  | 15.0%  | 14.3%  | 14.0%  | 13.9%  | 14.5%  | 14.2%  | 13.4%  | 13.3%  | 10                            | -6.46                                       | -32.7%   |
| MASSACHUSETTS        | 26.7%  | 26.6%  | 24.5%  | 22.9%  | 21.2%  | 20.58  | 20.2%  | 20.1%  | 19.9%  | 19.4%  | 18.9%  | 18.9%  | 19.0%  | 18.5%  | 18.2%  | 18.0%  | 17.7%  | 39                            | -8.99                                       | -33.6%   |
| MICHIGAN             | 16.4%  | 16.4%  | 15.5%  | 14.9%  | 13.9%  | 13.66  | 13.4%  | 13.3%  | 13.7%  | 13.6%  | 13.4%  | 13.2%  | 13.2%  | 12.8%  | 12.6%  | 12.4%  | 12.2%  | 5                             | -4.24                                       | -25.9%   |
| MINNESOTA            | 19.0%  | 18.8%  | 18.0%  | 17.9%  | 16.6%  | 16.04  | 15.3%  | 15.1%  | 14.6%  | 14.5%  | 13.5%  | 13.8%  | 13.7%  | 13.7%  | 13.4%  | 13.9%  | 14.1%  | 14                            | -4.97                                       | -26.1%   |
| MISSISSIPPI          | 26.6%  | 26.3%  | 25.3%  | 24.7%  | 24.3%  | 23.79  | 23.0%  | 23.0%  | 23.1%  | 22.7%  | 21.9%  | 21.5%  | 20.4%  | 20.3%  | 20.6%  | 20.0%  | 19.5%  | 49                            | -7.12                                       | -26.8%   |
| MISSOURI             | 26.1%  | 26.0%  | 24.9%  | 24.6%  | 23.1%  | 22.18  | 21.6%  | 20.8%  | 20.7%  | 20.5%  | 20.1%  | 19.3%  | 19.2%  | 18.8%  | 18.5%  | 18.8%  | 18.9%  | 45                            | -7.27                                       | -27.8%   |
| MONTANA              | 21.5%  | 21.5%  | 19.5%  | 19.7%  | 17.2%  | 16.92  | 16.3%  | 17.0%  | 16.9%  | 16.2%  | 15.5%  | 15.0%  | 14.9%  | 14.4%  | 14.9%  | 14.8%  | 14.2%  | 15                            | -7.32                                       | -34.1%   |
| NEBRASKA             | 22.3%  | 22.9%  | 22.9%  | 22.5%  | 22.7%  | 21.97  | 21.4%  | 21.7%  | 21.6%  | 21.0%  | 20.4%  | 19.4%  | 18.7%  | 18.8%  | 18.3%  | 18.3%  | 18.2%  | 42                            | -4.12                                       | -18.4%   |
| NEVADA               | 20.3%  | 20.5%  | 20.2%  | 20.1%  | 19.7%  | 19.05  | 18.8%  | 19.3%  | 18.4%  | 17.9%  | 17.5%  | 15.7%  | 15.3%  | 15.0%  | 15.4%  | 15.1%  | 15.2%  | 21                            | -5.06                                       | -25.0%   |
| NEW HAMPSHIRE        | 25.5%  | 25.1%  | 23.7%  | 22.7%  | 20.1%  | 18.77  | 18.4%  | 18.6%  | 18.8%  | 17.7%  | 16.9%  | 17.5%  | 17.6%  | 16.5%  | 16.5%  | 16.8%  | 16.1%  | 28                            | -9.39                                       | -36.8%   |
| NEW JERSEY           | 17.9%  | 17.8%  | 17.1%  | 16.6%  | 15.1%  | 14.54  | 14.2%  | 14.3%  | 14.1%  | 13.7%  | 13.2%  | 12.9%  | 12.8%  | 12.5%  | 12.3%  | 12.0%  | 11.5%  | 4                             | -6.38                                       | -35.6%   |
| NEW MEXICO           | 21.7%  | 22.0%  | 22.2%  | 20.3%  | 18.1%  | 19.55  | 17.3%  | 16.9%  | 16.1%  | 15.8%  | 17.2%  | 16.2%  | 16.2%  | 17.0%  | 18.2%  | 16.4%  | 16.8%  | 40                            | -3.62                                       | -16.7%   |
| NEW YORK             | 21.3%  | 21.4%  | 19.7%  | 19.5%  | 18.2%  | 18.03  | 17.6%  | 17.4%  | 17.3%  | 16.9%  | 16.0%  | 15.7%  | 15.5%  | 15.0%  | 14.2%  | 14.0%  | 13.6%  | 11                            | -7.69                                       | -36.1%   |
| NORTH CAROLINA       | 21.4%  | 21.3%  | 18.0%  | 16.5%  | 15.6%  | 15.03  | 14.8%  | 15.4%  | 15.3%  | 14.9%  | 14.8%  | 14.7%  | 14.4%  | 14.0%  | 14.0%  | 13.7%  | 13.7%  | 12                            | -7.72                                       | -36.0%   |
| NORTH DAKOTA         | 21.3%  | 21.2%  | 19.8%  | 19.1%  | 18.7%  | 17.97  | 18.3%  | 19.0%  | 19.3%  | 19.1%  | 19.1%  | 19.1%  | 18.2%  | 17.7%  | 17.5%  | 16.4%  | 17.1%  | 34                            | -4.15                                       | -19.5%   |
| OHIO                 | 25.4%  | 25.4%  | 24.5%  | 24.1%  | 22.0%  | 21.57  | 21.6%  | 21.8%  | 22.0%  | 21.3%  | 20.4%  | 20.1%  | 19.3%  | 18.4%  | 17.8%  | 17.4%  | 17.1%  | 33                            | -8.30                                       | -32.6%   |
| OKLAHOMA             | 27.3%  | 27.5%  | 25.5%  | 23.0%  | 21.7%  | 21.47  | 20.9%  | 20.7%  | 21.0%  | 20.2%  | 19.9%  | 19.6%  | 19.4%  | 19.4%  | 19.6%  | 20.4%  | 19.8%  | 50                            | -7.57                                       | -27.7%   |
| OREGON               | 21.5%  | 21.3%  | 19.2%  | 19.1%  | 18.3%  | 18.41  | 17.1%  | 17.8%  | 18.5%  | 16.8%  | 17.3%  | 17.4%  | 16.9%  | 17.0%  | 15.2%  | 14.5%  | 14.3%  | 16                            | -7.17                                       | -33.4%   |
| PENNSYLVANIA         | 22.3%  | 22.2%  | 21.1%  | 20.5%  | 18.8%  | 18.30  | 17.9%  | 17.6%  | 17.6%  | 17.3%  | 16.6%  | 16.7%  | 16.0%  | 16.0%  | 15.9%  | 15.7%  | 15.7%  | 25                            | -6.65                                       | -29.8%   |
| RHODE ISLAND         | 24.0%  | 23.9%  | 20.2%  | 20.3%  | 17.5%  | 16.87  | 16.5%  | 17.0%  | 17.2%  | 17.3%  | 17.0%  | 17.0%  | 17.2%  | 17.5%  | 17.5%  | 17.5%  | 17.6%  | 38                            | -6.36                                       | -26.5%   |
| SOUTH CAROLINA       | 20.7%  | 20.6%  | 18.3%  | 17.2%  | 15.5%  | 15.32  | 15.6%  | 15.3%  | 15.5%  | 14.6%  | 14.2%  | 14.3%  | 13.9%  | 14.1%  | 13.9%  | 14.0%  | 14.9%  | 18                            | -5.76                                       | -27.8%   |
| SOUTH DAKOTA         | 21.5%  | 21.5%  | 20.5%  | 20.0%  | 18.6%  | 17.99  | 18.1%  | 18.2%  | 18.4%  | 18.1%  | 17.7%  | 16.4%  | 16.5%  | 16.2%  | 16.2%  | 16.3%  | 17.0%  | 32                            | -4.49                                       | -20.9%   |
| TENNESSEE            | 30.0%  | 29.3%  | 27.2%  | 25.0%  | 23.4%  | 23.08  | 22.7%  | 22.5%  | 22.8%  | 21.6%  | 20.6%  | 20.3%  | 19.3%  | 19.2%  | 18.1%  | 17.3%  | 17.2%  | 35                            | -12.71                                      | -42.4%   |
| TEXAS                | 28.8%  | 28.9%  | 28.0%  | 27.9%  | 26.5%  | 25.72  | 25.3%  | 24.6%  | 23.8%  | 23.2%  | 22.5%  | 20.9%  | 20.2%  | 19.2%  | 18.5%  | 18.1%  | 17.3%  | 36                            | -11.58                                      | -40.1%   |
| UTAH                 | 27.1%  | 26.9%  | 26.4%  | 25.0%  | 21.7%  | 21.88  | 23.1%  | 22.8%  | 21.2%  | 20.4%  | 16.6%  | 15.8%  | 18.2%  | 17.0%  | 16.4%  | 17.9%  | 17.0%  | 31                            | -10.10                                      | -37.3%   |
| VERMONT              | 25.4%  | 25.7%  | 23.4%  | 20.3%  | 18.8%  | 18.23  | 18.0%  | 19.2%  | 18.9%  | 18.8%  | 17.6%  | 16.2%  | 16.5%  | 16.8%  | 16.8%  | 16.0%  | 16.4%  | 30                            | -9.01                                       | -35.5%   |
| VIRGINIA             | 23.0%  | 22.9%  | 22.1%  | 22.1%  | 19.7%  | 19.04  | 18.2%  | 18.5%  | 18.4%  | 18.1%  | 17.2%  | 17.0%  | 17.0%  | 16.8%  | 15.7%  | 15.5%  | 15.8%  | 26                            | -7.23                                       | -31.4%   |
| WASHINGTON           | 22.3%  | 21.8%  | 20.6%  | 20.2%  | 18.6%  | 17.83  | 17.5%  | 17.0%  | 17.6%  | 17.0%  | 16.7%  | 15.9%  | 15.8%  | 15.5%  | 15.1%  | 15.4%  | 15.1%  | 20                            | -7.21                                       | -32.3%   |
| WEST VIRGINIA        | 20.5%  | 21.5%  | 20.4%  | 19.8%  | 16.5%  | 16.08  | 16.6%  | 16.2%  | 16.4%  | 16.7%  | 16.0%  | 16.1%  | 15.7%  | 16.4%  | 17.1%  | 15.5%  | 15.5%  | 24                            | -4.98                                       | -24.3%   |
| WISCONSIN            | 19.0%  | 18.9%  | 18.0%  | 17.7%  | 16.3%  | 15.41  | 14.6%  | 14.2%  | 14.3%  | 13.9%  | 13.6%  | 13.2%  | 13.0%  | 12.8%  | 12.7%  | 13.0%  | 12.9%  | 9                             | -6.16                                       | -32.3%   |
| WYOMING              | 16.8%  | 16.9%  | 17.5%  | 17.0%  | 17.9%  | 16.52  | 15.6%  | 15.1%  | 14.6%  | 13.9%  | 12.9%  | 12.4%  | 12.5%  | 12.1%  | 11.5%  | 12.7%  | 12.8%  | 7                             | -4.07                                       | -24.2%   |